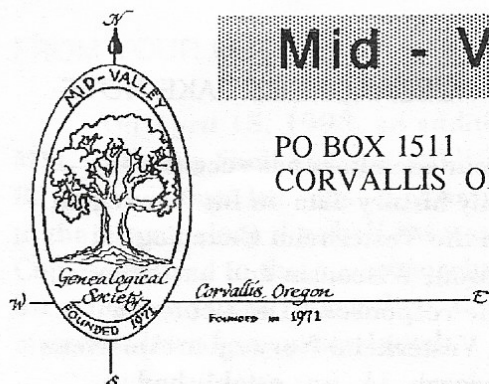


# Mid - Valley Genealogical Society



PO BOX 1511  
CORVALLIS OR 97339

NEWSLETTER

VOL VIII NO. 6  
JUNE 1993

PRESIDENT: DANIEL FROEHLICH

EDITOR: ED STRATTON

## POTLUCK TODAY

Today instead of our regular meeting we will have our annual pot-luck lunch.

The business meeting will be at 12:00 Noon and then we will eat. With luck it will be under the trees, and if mother nature doesn't agree, it will be inside.

## ODDS AND ENDS

The Library is open every Tuesday afternoon from 12:30 until 3:00 pm. Librarians are on hand to help you with your questions. You may return books on Tuesday, but no books may be checked out.

Remember our number at the OSU thriftshop is 492.

If you don't already belong to the Benton County Historical Society, why not consider joining? Contact a board member to find out what it is about.

## LABELS

Don't forget to bring in the UPC Symbol from your Flav-R-Pak and Santiam labels. Be careful to cut a little extra package around the Symbol so that all of it is there. There is a plastic box in the library to store them in.

## POLICY ON CLEAN-UP AFTER MEETINGS

The people that sign up to bring the goodies are responsible for the clean-up after the meeting.

Policy directions will be posted about this and also about setting up the hot water, coffee, and the rest of the kitchen on meeting days.

## CANADIAN INTEREST GROUP

Canadian Interest Group, is for those searching for their roots in Canada. This group meets the third Tuesday of each month, from 12:30 to 3:30 pm at the Albany Public Library. If you have a specific area of Canada you are interested in, please let me know so we can have books and printed materials there for you to look at. We have resources available for Manitoba, Ontario, Nova Scotia, New Brunswick, and some Quebec, plus Canada in general. Car pooling can be arranged. Call Pat Rawlinson, 752-2243.

## MONTHLY SHARING

Each month we have a table to bring books or other artifacts to share with the other members, from the area we are specializing in. The items are used for that one day only, you take them home that night. Following is the listing for the ten months that we have meetings.

If you have books or items to share, please bring them as shown below.

If we do not have your area of interest, please contact a board member and let's see if we can update the listing to satisfy your needs.

Jan	PA, OH
Feb	OR, WA, ID, MT
Mar	VA, WV
Apr	NC, KY, TN, and Germany
May	L, MI, WI, Ireland and Scotland
Jun	N, IA, KS
Sep	NY, NJ, MD, DC
Oct	NH, VT, MA, ME
Nov	CT, RI, DE
Dec	Auction and Christmas Tea

## NEW LIBRARY RULES

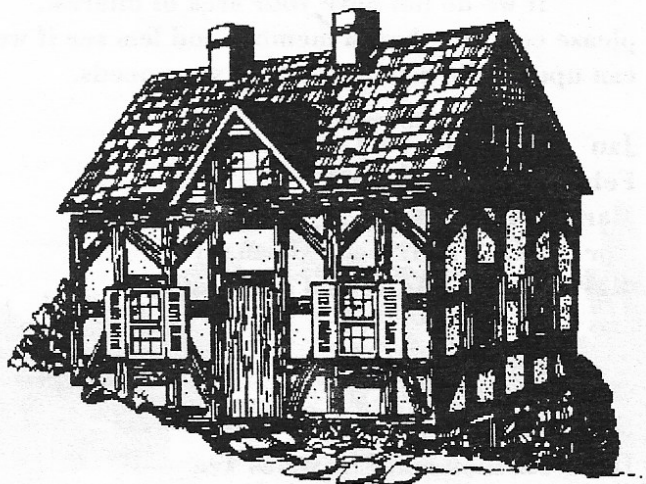
There are the new rules in effect for the library.

1. Books may be checked out by members on Meeting days as usual and on Tuesdays with the following changes. During the winter months when we are meeting regularly, they are to be returned at the next meeting. In the summer months, when there are no meetings, they may be kept for one month.
2. In order to minimize the problem of members keeping books out for extended periods, the following will apply. If a book is out for two months, the librarian will then notify the holder that it is overdue. If it has not been returned at the end of six months, the holder will be expected to pay for the book.

## GARAGE SALE

The garage sale was a huge success. On May 22, at Jean Grube's, we took in over \$300.

Thank you to the generous contributions of our members and to the hard work of Shirley Hill, Betty Swan, Joy Read, John Redmon, Joanne Perry, Maybelle Martsching, Rebecca Kiger, Charles Sartwell, Damaris Reynolds, and the most especially to Pat Coolican and Jean and Joe Grube. We worked hard, but we had fun and the new books we can buy made it all worthwhile.



## NORWEGIAN RESEARCHERS TAKE NOTE

One of our members has recently requested family history data on his Norwegian ancestors from the Vesterheim Genealogical Center in Madison, Wisconsin and has been pleased with the responses. The Center, a division of the Vesterheim Norwegian-American Museum in Decorah, IA, was established to promote the study of Norwegian heritage and ethnic background, having a stated mission to help genealogists with Norwegian and Norwegian-American research. Its services include library and archival searches of Norwegian census records, local histories, church records, cemetery records, emigrant lists, passenger lists, etc, in addition to Wisconsin genealogical resources. Rates for research time are \$8.00 per hr for members, and \$12.00 per hr for non-members. Membership rates are \$16.00 per year which includes a quarterly newsletter. Membership letters should be sent to Vesterheim, Norwegian-American Museum, 502 West Water St., Decorah, IA 52101. Genealogical requests should be sent to the Vesterheim Genealogical Center, 415 West Main St., Madison, WI 53703. For additional information call Ken Bielma, 929-2720.

## MICROFICHE

We have a microfiche reader in our library to loan out to members. It carries the same restrictions that a book carries. We also have a limited number of micro fiche cards. If the interest is great enough we could get more fiche. Let your board members know your feelings.

Also, in the library is a microfiche from the Illinois Regional Archives. It lists the records the archives, called IRAD, has. They say they will answer mail inquiries if you follow these guidelines; No more than two names at a time; Full name of the person you are researching; Approximate year this person is expected to appear in a record; Name of country; Record title or type to search.

Address: IRAD  
Illinois State Archives  
Springfield IL 62756

2 There is no mention of a fee.

## FROM YOUR LIBRARIAN

On April 15, 1993, an addition to the MVGS Library Shelf List was published. It listed 82 books, pamphlets, etc., that have been added to the library since the shelf list was published. Copies are free to those who purchased the shelf list -- honor system. Since then, the following materials have been accessioned:

Genealogies Catalogued by the Library of Congress Since 1986

Index to Southwestern Wisconsin, a History of Old Crawford County

Tracing your Scottish Ancestry, by Kathleen B. Cory

Some Connecticut Nutmeggers Who Migrated, by Knox & Ferris

The New Loyalist Index, by Bunnell  
Westchester Patriarchs (prior to 1755), by Davis

Newspaper Genealogical Column Directory, 5th ed., by Milner

Index to Biographical Review of Dane County, Wisconsin, 1893

Irish Genealogy; a Record Finder, by Begley  
A Summary Guide to Local Records in the Illinois Regional Archives

German Immigrants, Bremen to New York, 1868-1871, by Wolfert Early

Ohio Settlers, East & East Central Ohio, 1800-1840

Virginia Genealogy, Sources & Resources, by McGinnis

Early Ohio Tax Records, by Powell  
The Complete Books of Emigrants, 1751-1776, by Coldham

Virginia Settlers, Vol. I, by Coppage  
Ohio Lands, Steubenville Land Office, 1800-1820, by Bell

Guide to Family History Sources in the New Jersey State Archives

Indiana Bible and Family Records, Vols. 1-6, by Indiana DAR

Maryland Genealogical Research, by Schweitzer

Massachusetts Genealogical Research, by Schweitzer

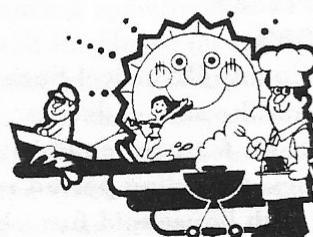
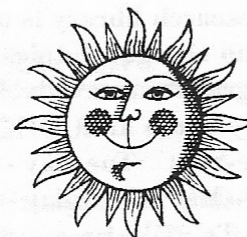
Guide to Genealogical Sources at the Pennsylvania State Archives, by Dructor  
Pennsylvania Pioneers -- Philadelphia, 1727-1808, by Strassburger & Hinke, 2 Vols

Annotated Bibliography of Ohio Patriots; Revolutionary War and War of 1812

Missouri Genealogical Records & Abstracts, Vol 5, by Eddlemon.

## MORE LIBRARY

Here is a note from Mary Yoke. Please sign up on the volunteer list to be librarians on Tuesdays. If we don't have the librarians, the library will not be open this summer.



## OREGON TRAIL CELEBRATION

Benton County will celebrate its Oregon Trail heritage Saturday, June 26, 11 am to 8 pm, at Starker Arts Park. The Corvallis Convention & Visitors Bureau is coordinating the event, in conjunction with the Oregon Folklife Festival. Featured activities include folk music, an arts and crafts fair, and food booths. There is no admission charge.

The highlight will be a two-hour performance from the musical *Voices from the Oregon Trail*, by The Trail Band from Portland. Throughout the day, there will be historical exhibits and living history demonstrations about the pioneer era. Those who attend the festivities are encouraged to wear period clothing. For more information about this event or a complete performance schedule for *Voices from the Oregon Trail*, call the Convention and Visitors Bureau at 757-1544 or (800) 334-8118. From The Society Record of Benton County.

## LINCOLN COUNTY HISTORICAL SOCIETY

by Sandy Ihrig

The Lincoln County Historical Society research library holds photographs, manuscripts, documents, maps, genealogical material, oral histories and other printed materials for the investigation and preservation of local history. The research library is open by appointment to all at no charge. Copies of printed materials and photographs are available for a fee.

Library hours are:

June-Sept Tuesday - Saturday 10 - 5

Oct - May Tuesday - Saturday 11 - 4

To make an appointment to use the library services write or call:

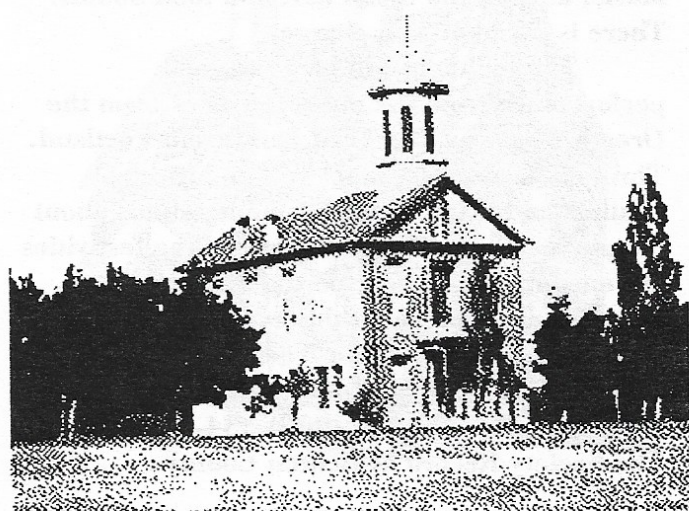
545 S.W. 9th Street

Newport OR 97365

(503) 265-7509

The Lincoln County Historical Society Museum Complex is at the same address. The Burrows House Museum features exhibits of Lincoln County history, including period rooms of the Victorian era with household furnishings and clothing.

The Log Cabin Museum, next door, houses unique collections from the Siletz Reservation and features exhibits of the history of pioneering, and the logging and fishing industries in Lincoln County. Both museums are with the suggested donation of \$2 each, and are located directly behind the National Guard Armory.



## NEW YORK STATE ARCHIVES

From the Twin Tiers Genealogical Society in Elmira NY, by way of Pat Coolican.

### ANNOUNCEMENT OF VITAL RECORD INDEX SEARCH SERVICE

The New York State Archives has instituted a new vital records index search service. Genealogists and other researchers can now request a search of the State Department of Health microfiche indexes to vital records. The indexes cover the entire state (except New York city, and Albany, Buffalo, and Yonkers prior to 1914). The indexes now available span the years 1800/81 - 1943 for marriages and deaths, and 1881 - 1918 for births. The indexes are transferred to the Archives after 75 years for births, and after 50 years for marriages and deaths.

Researchers may request the New York State Archives to search one vital records index (birth, marriage, or death) for one name for up to three specific years. The request must be made on a Vital Records Index Search Request form. Copies for the request form are available from the New York State Archives. Each request must be accompanied by a check or money order for \$5.00 (U.S. Funds).

Applicants requesting a search of the birth or marriage indexes must sign a statement that the individual named in the request is now deceased.

The State Archives' response to a search request will indicate date, place, and Department of Health certificate number for each event found in the index. Multiple events for the name searched will be indicated on the response, as will findings of no events. (There will be no refunds for unsuccessful searches.)

The State archives holds no original birth, marriage, or death records. Abstracts of birth, marriage, and death certificates for genealogical research are available, for a fee, from the local registrar of vital statistics; or from the New York State Department of Health (for events outside New York City) or the New York City Municipal Archives (for events in New York City).

The microfiche indexes are available for public use Monday through Friday 9:00 - 5:00 in the State Archives research room, located in the Cultural Education Center (11th floor) in downtown Albany. For further information, contact the New York State Archives at (518) 474-8955.

4