

KING FOLK

Newsletter # 28

King Family Association

Published April 2009

KING FOLK REUNION
SATURDAY, JUNE 27, 2009
9:00 A.M. – 4:00 P.M.

KINGS VALLEY CHARTER SCHOOL
39088 KINGS VALLEY HIGHWAY
(IN THE GYM AT BACK OF SCHOOL)

The morning session is a workshop. Please bring King family material to share. Pictures are especially wanted and may be scanned to our CD. (see info. in newsletter) Perhaps you will discover a new relative, or be able to assist someone else with their research. A copy machine will be available to use free of charge. Coffee and donuts provided.

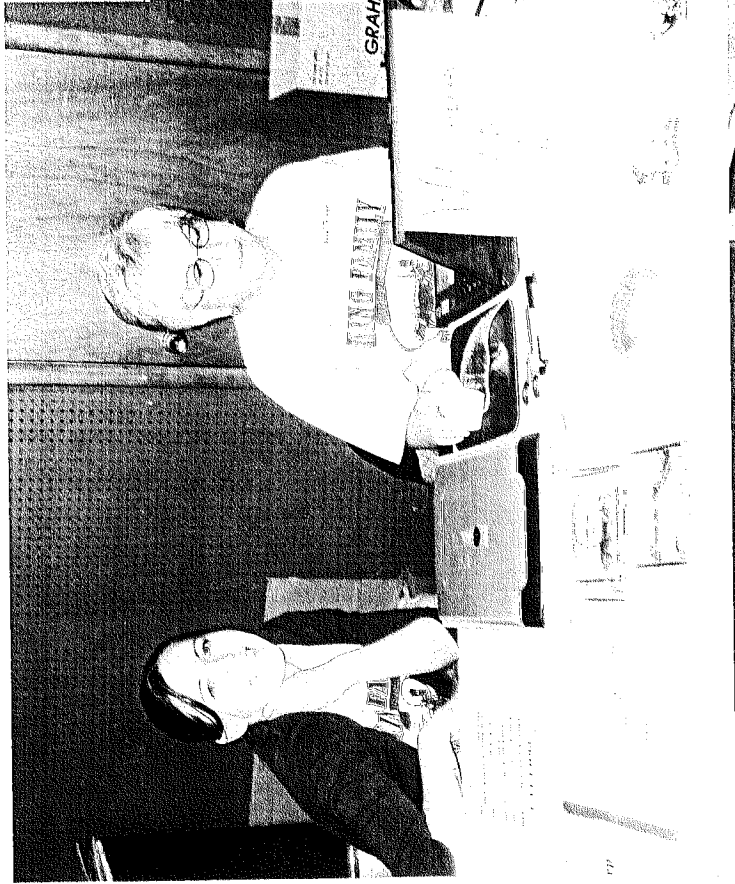
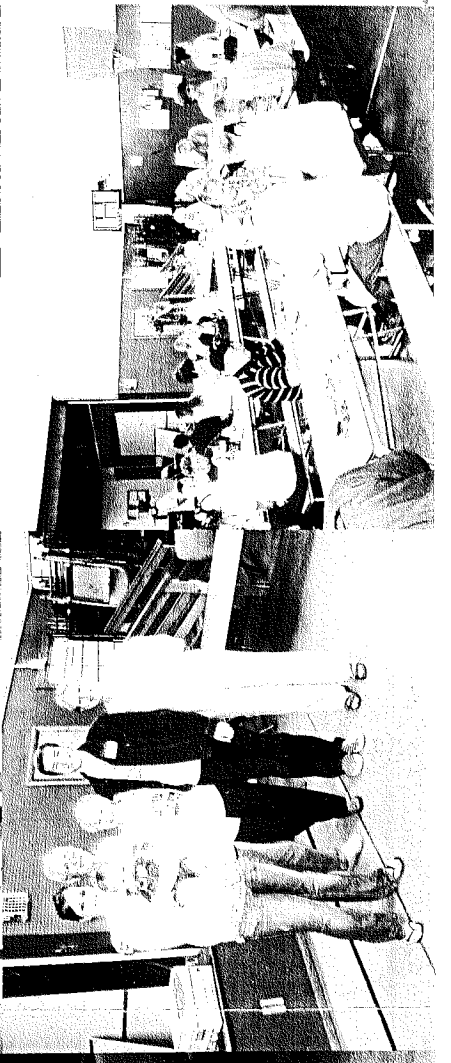
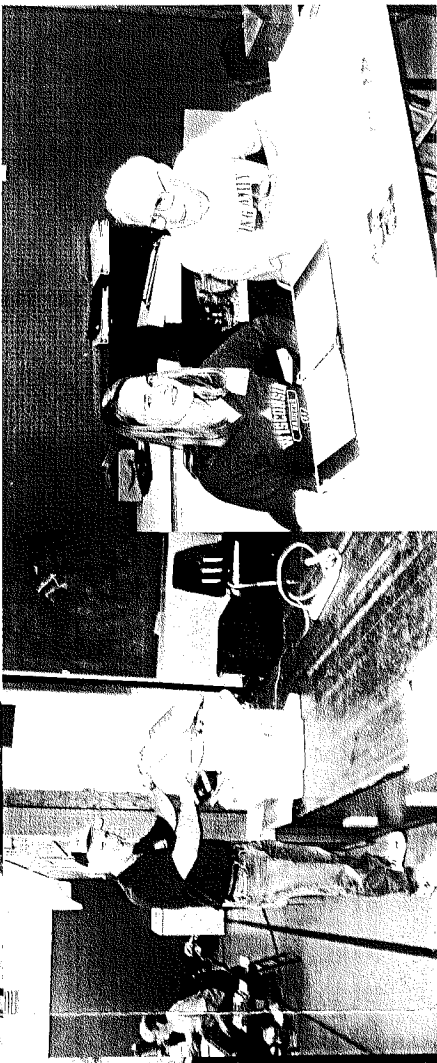
POTLUCK LUNCH AT NOON

Please bring a main dish and one other item of your choice (dessert, salad or munchies). Bring your own table service. Coffee, soda pop and bottled water will be provided. There is refrigeration in the kitchen but only a small microwave for reheating.

BUSINESS MEETING AT 1:30 P.M.

(Need more information? See back page to contact officers)

See next page for candid shots from 2008 reunion compliments of Nigel Parkhurst.



PRESIDENT'S LETTER – APRIL 2009 – MIMI STANG

Greetings King Family members. Once again I have had the honor of being the president of the King Family Association - I am so pleased to work with such a wonderful family.

As Oregon is celebrating its 150th anniversary of statehood this year, I keep thinking that our King family had already been here 14 years! By 1859 the Kings and their many descendants were well established in the Oregon Territory. Most had remained in the proximity of the Kings Valley and Corvallis areas with the exception of Amos Nahum King who by then was in Portland operating a tannery and already the owner of a substantial amount of real estate. It truly is a wonderful legacy for all of us.

Last June's reunion found us back at our familiar Kings Valley Charter School. We had some new faces with us as well as many of our "regulars." It was good to be there once again. This year's reunion, on Saturday, June 27th, will also be at the Kings Valley Charter School. See front page of newsletter for complete information.

The highlight for us last year was the completion of the project of a King Family marker for the Kings Valley Cemetery. It took two years of donations, dues, and many months of planning, but the marker finally became a reality and was in place just in time for the 2008 reunion. Many of us "caravanned" to the cemetery after the reunion for photo ops. I have an article and photos (many thanks to Nigel Parkhurst) elsewhere in the newsletter. If you have not yet gone to the cemetery to see the marker, I urge you to do so. It really is beautiful.

I am very pleased to announce that author Linda Crew will be with us again at this year's reunion in honor of the "republishing" of her King family book *A Heart for Any Fate*. See Linda's letter on page 8.

Last year we noted that many reunion attendees did not attend in the morning – in fact, it seemed to us that a great many of you arrived all at once just at noon! We were really overwhelmed. This makes it very difficult to get you registered, to sell you a T-shirt or a CD, to get your food out, etc., and to give those at the registration table the opportunity to eat lunch. I would really encourage more of you to come earlier – please! The morning session is the time to visit with old and new friends, review what others have to share, to learn about their families, to look at displays and photographs, to have your photos scanned for the King family CD, and, especially, to look through our Historian David Trask's many family notebooks. We are set up and ready to begin by 9 a.m.

As always, I am looking forward to seeing many of you at the reunion. If it is your first reunion, please let us know so that we can put you in touch with others in attendance that are connected to your family.

BITS AND PIECES

King Family Reunion T-shirts – those of you at the reunion last year had the opportunity to purchase our brand new T-shirts. A teacher at South Salem High School did the graphic and printed them. The graphic is similar to the one we used before – a covered wagon with oxen, a pioneer walking & two in the wagon. No date on them this year but King Family Reunion, Kings Valley, Oregon, is included. Seventy-five were ordered with about half left to sell this year. The cost is \$10.00 at the reunion, \$15.00 if mailed. The color is sage green. Sizes are Adult Small, Medium, Large, X-Large & XXLarge. Send a \$15.00 check made out to “King Folk” with your order to Mimi Stang if you want one mailed to you.

Dues Payment Checks Reminder – Please remember to make checks out to “King Folk.” The Washington Mutual Bank where we have our checking account will not accept checks made out any other way – save our Treasurer, Anne Trussell, the trouble of having to send a check back to you to be reissued!

A Heart for Any Fate is being reissued by another publisher with a new cover and historic notes about the King Family by our King Family Historian, David Trask. Please see author Linda Crew’s article, which includes information on the book launch party on April 18th and on ordering copies of the book. It’s exciting.

Congratulations to Ryan Trask, son of our King Family Historian David Trask and his wife Libia, for winning first place in an art contest sponsored by the Sons and Daughters of Oregon Pioneers. Ryan, a 9-year old 4th grader, had to draw a scene depicting the trek on the Oregon Trail to commemorate Oregon’s 150th birthday. See the article, copy of Ryan’s winning drawing (and Ryan) elsewhere in the newsletter.

Seventh generation King! We were really pleased to have a 7th generation King at the 2008 reunion. Ian Michael Rhodes, age 7 months, the great grandson of our Earle and Vangie Greig, attended with his parents, Katie and Anthony Rhodes. A four-generation family photo is included in the collage on page 2.

Something New: We have decided to add something new to the King Folk – a query section. You will find some queries already posted – perhaps someone who receives the newsletter will have an answer. If any of you have a query send it to Mimi Stang, newsletter editor. Mimi will work with the other King Family Association officers on finding someone who can help. We will try to have answers ready by the reunion.

King Family CD – The 2007, 2008, and 2009 King Family CD's will be available for purchase at the reunion. The CD's contain LOTS of King family photographs and some documents, as well as photos of an older Kings Valley... its inhabitants, occupations, sports, schools and leisure activities of the past. Besides a photo index, the CD's have information on five generations of the King Family, which is updated each year with the newest information from death certificates, obituaries, marriage records, cemetery records, census records, and family group sheets. Cost at the reunion for each CD will be only \$5. If you can't attend the reunion, the CD's can be mailed to you after July 1. Cost: \$7 for one CD; \$12.50 for two CD's; \$18 for three (price includes the cost of the CD's). Send checks (made out to **King Folk**) to Anne Trussell, 2108 Stacia Way, Sacramento, CA, 95822. Please specify which CD(s) you want and an email address or phone number. These CD's are priced nearly at cost. Any profit goes to the King Family treasury to support our projects.

Photo Scanning Project –

Would you like to share your old family photographs with the rest of the King Family? We scan the original and return it to you. The scans are placed onto a CD each year. A copy of each CD is donated to the Benton County Museum, which has allowed us to use their photos for this project. All photographs on the CD are for private use only and may not be published (even on the Internet) without permission of the owner of the original photograph.

Last year's CD contained 184 photographs as well as a copy of the King Family Bible, the 1855 "Mansion House Agreement" (between Solomon and Nahum & Sarepta), and Nahum's 1812 War record. Some of those photos include the Hoskins store and covered bridge, the Kings Valley mill, Kings Valley High School, 1962 King Family reunion, and so much more. King photos include those of Lydia King and her husband, Jonathon Williams, as well as Rhoda King and photos both her husbands, John Phillips and Eli Summers.

Do you have photos to share? Here are some different ways:

- 1. Bring them to the reunion. We'll scan them and return the originals to you.*
- 2. Can't come to the reunion and still want to share your photographs? Maybe we can come to you. We have a laptop and a portable scanner. Regardless of where you live, contact Earle Greig or Anne Trussell.*
- 3. Can you scan your own photographs or have a family member who can? If so, send them to Anne as email attachments or save them to CD and bring it to the reunion (or mail it to Anne).*

Thanks to everyone who contributed photographs for the 2008 King Family CD: Norm Chambers, Jackie Eckert, Earle Greig, Pat Holler, Naomi Kiger Jones, Nigel Parkhurst,

Parkhurst, Carol Putman, Ethel Sheppler, Mimi Stang, and Audrey Theurer, The Benton County Museum.

Help!! We still need photographs of the following (and their spouses): Saretta, Lucretia, Isaac, Solomon.

Is this Lovisa? A photograph of Rowland Chambers with seven of his sons was published in Lambert Forin's 1970 book "Ghost Towns of the Pacific Frontier." Can you help us find a copy of that photograph? Lambert Florin's file at the Oregon Historical Society contains this photograph, unidentified, of a woman, three girls, and a baby. Could this be Lovisa and her daughters? We'd sure appreciate your suggestions and comments. Anne Trussell



DID YOU KNOW? A King family descendant, Harriet Lupton, was Miss Oregon Pioneer in 1938. This is an honor given annually by the Sons and Daughters of the Oregon Pioneers. (The same organization that honored our Ryan Trask this year). David Trask mentioned this – I checked into Harriet's family and discovered that she was the daughter of Dr. Irving Martin Lupton and his wife Hildreth Humason Lupton. Hildreth was the daughter of Ivan and Harriette Jeffery Humason. Harriette Jeffery was the daughter of Edward James Jeffery and Nautilla A. King. Nautilla was the daughter of Amos Nahum King, Nahum's son, who settled in Portland, owned a great deal of real estate, including the land where the Multnomah Club and PGE Park are today, among other properties. Noteworthy that 71 years later we have another King family descendant honored by the Sons and Daughters of the Oregon Pioneers.

HIGHLIGHTS FROM JUNE 2008 REUNION MINUTES

Patricia Plunkett Holler - Secretary

About 55 family members & guests attended, enjoyed visiting and a great potluck.

Ellen Craven displayed a painting of a house once owned by Caroline Patterson, the oldest daughter of Rhoda Ann. The house is located in Dakota, Washington – Ellen was born in that home and her brother still lives there – has been in their family since 1918.

The King Family marker in Kings Valley Cemetery is in place – Mimi urged members to go to the cemetery after the business meeting to see it and for photo ops. A total of \$1240 was donated toward the monument cost.

Anne Trussell is still working on King Family photo CD's – she has them available to sell - 2007 (192 photos) and 2008 (184 photos). All proceeds go into the King Family treasury. We still need photos of the following King children: Lucretia, Lovisa and Saretta. Norm Chambers announced that he has a head shot photo of Lovisa on a tintype.

Author Linda Crew – *A Heart for any Fate* – has lined up a new publisher for another edition of her King family novel. She will let us know when it will be republished.

Historian David Trask reported that he has been working hard to update his family history notebooks. It is now twenty years since he took over the King Family Historian responsibility from Nathan King. David has accumulated nearly 1700 obituaries of family members. He requested that as well as obituaries, he would like to have family members death certificates sent to him. Members may request copies from David.

A discussion was held pertaining to unmarked graves in the Kings Valley Cemetery with no action taken at this time.

MESSAGE FROM LINDA CREW – author of A HEART FOR ANY FATE

On Oregon's 150th birthday, I received good news: The Oregon State Library has chosen A HEART FOR ANY FATE for its list of 150 Oregon Books for the Sesquicentennial.

Also, I'm pleased to announce that, by the time King family members are reading this, the new edition of the book will be available, and hopefully it will continue to be for a good long time to come. It has been a long, rutty and twisted trail to get to this point, but I'm happy with how it seems to be turning out. When the Oregon Historical Society Press ceased operations, I had approached and discussed a new edition with several publishers, but I feel now that the connection with Ooligan Press at Portland State University was meant to be. Right from the start the students (it's a student run publishing program) seemed wildly enthusiastic about the book itself, and, being local, they seem to have a sense of the importance of the Oregon Trail story to us Oregonians. They're putting more into promotion than was the case with the original publisher. For example, a poster size blow-up of the cover was spotted in Texas at a convention for the National Council of Teachers of English. Also, Ooligan is publishing some supplementary teaching materials by Gail Vanderheide, a teacher who has been actively promoting the use of the book in teaching social studies, especially geography.

I'm sure many of you will continue to prefer the original cover with your own Haley Thompson, a King family descendant, as the model for Lovisa. But I do like the new cover Ooligan has come up with as well. It was not at all what I was expecting, but is very much in keeping with the current style for "edgy" young adult titles. I believe it will prove highly marketable to teenagers. The new Lovisa's look is intense, immediate, and alive, surely dispelling any young reader's fear of dry, dusty history!

While some of the King family photos have been included at the end of the book, the new edition does not contain the lovely collection which graces the first edition, most of which were property of the archives of the Oregon Historical Society. It does, however, include a foreword, giving the context of Oregon Trail history and, best of all for King family members, a wonderful family historical note by David Trask, King Family Historian. Cover price on the new edition is \$11.95, making it less expensive than the first edition paperback at \$14 and the hardback at \$25.

The "About the Author" section includes this update on our lives: "Linda's choice of the Kings as the main characters came from her attachment to Kings Valley in her native Benton County. Recently, Linda and her husband were able to fulfill a dream by acquiring forested property adjacent to some of the original King family land donation claims, where they farm trees. Linda looks forward to many happy days of working in Kings Valley." For those of you familiar with the area, our new property is just north and on the opposite side of the highway from the Bezell Forest property, a Benton County park. Our land lies adjacent to the original claim of Isaac King and from certain places on it, we can see north into Kings Valley itself.

Ooligan has set up a book launch party at the historic McLoughlin House in Oregon City on Saturday, April 18th, at 2:00. Also, I've been invited to appear at a historic bookstore in The Dalles in September. I would love to see some King family members at these events. If you come, please do identify yourselves to me! I plan to show slides at both events, so those of you who've only seen the washed out version in

the Kings Valley gym, this is your chance for better lighting! I will keep any other bookings posted on my website at www.lindacrew.com.

As always, I'm happy to ship you signed and personalized copies of whichever edition you choose. My snail mail address is 950 SW Wake Robin Ave., Corvallis, OR 97333. More info on the website.

See you at the reunion!

Linda Crew

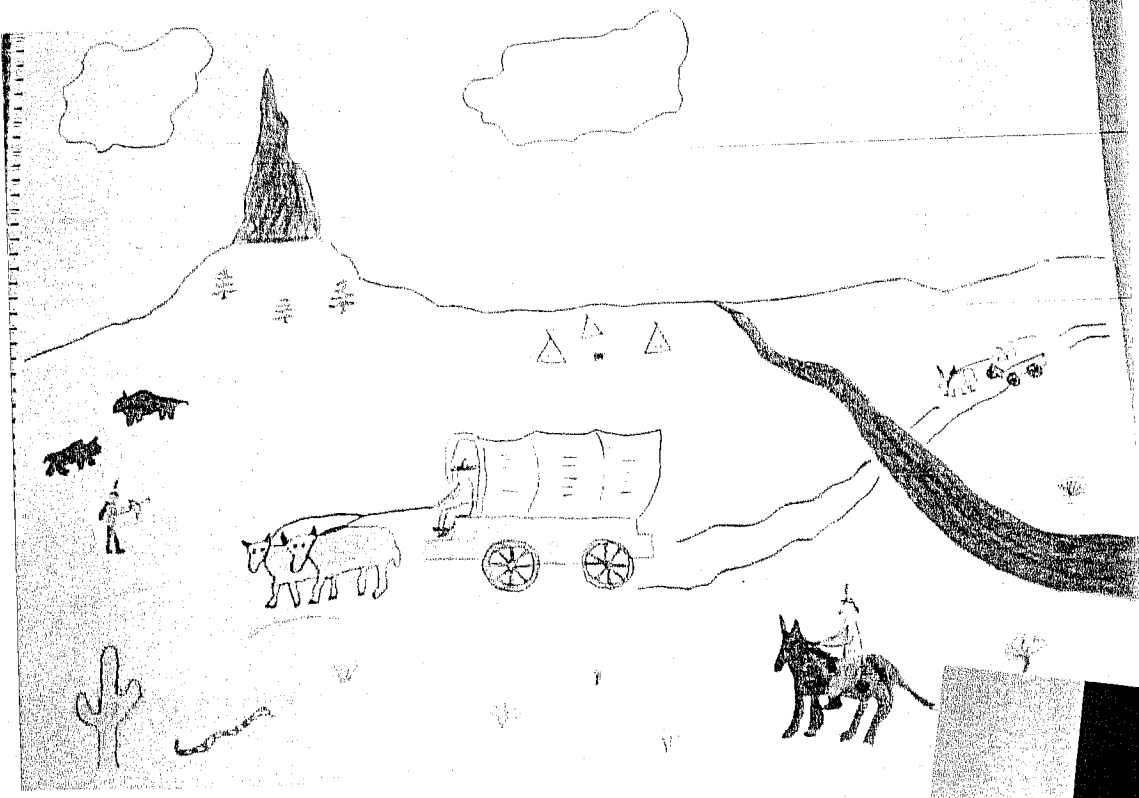
RYAN TRASK AWARD by David Trask

The Sons and Daughters of Oregon Pioneers sponsored several state-wide contests for junior members to commemorate the Sesquicentennial of Oregon Statehood last fall. Nine-year-old Ryan Trask, son of our King Family Historian, David Trask, and his wife, Libia, won first place in the art contest for first through fourth graders.

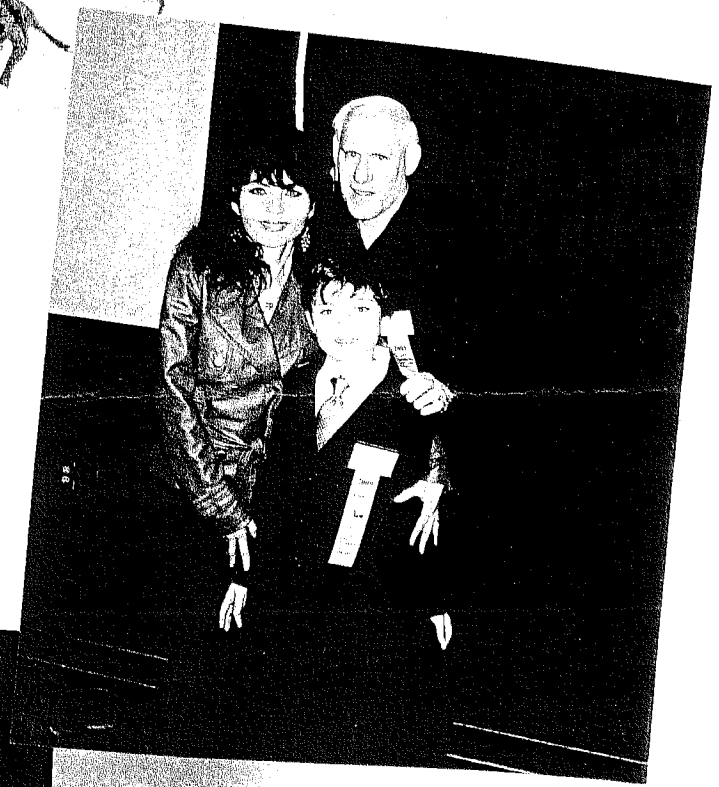
The artwork was to depict a scene representing the migration to Oregon, and contestants had to be junior members in good standing. Ryan is an eighth-generation Oregonian, and a 5th great grandson of Nahum and Sarepta King. He was honored at the annual banquet held in Portland on February 15, 2009, and was presented a cash award of \$100.00. He dedicated his drawing to the King Family, in honor of their trek to Oregon in 1845. His artwork was inspired by Linda Crew's book about our King family, "A Heart For Any Fate." Ryan has attended our Kings Valley Reunions in the past, and met Linda Crew personally a few years ago. He treasures his autographed copy of her book and has shared the book and the story of his family with his class at school, which has been learning about pioneer life in Oregon 150 years ago.

In addition to being recognized before 200-plus attendees at the banquet as a member of the King family, this special event took place at the prestigious Multhomah Athletic Club in downtown Portland, on land once owned by Amos King. Amos was a brother of Isaac King, who was Ryan's 4th great grandfather. So, the King family was honored twice at the banquet, once as being Ryan's family, and also for the historic note about celebrating this special Oregon anniversary on Amos King's land, and numerous people came up afterwards to learn more about our family.

See Photos of Ryan, his artwork and his very proud parents on next page.



RYAN, LIBIA & DAVID TRASK



MESSAGE FROM DAVID TRASK – KING FAMILY HISTORIAN

Over the last year and a half, I have added nearly 600 obituaries and copies of about 500 death certificates of King descendants and spouses to what I already had. Mimi Stang and Anne Trussell have contributed a lot of effort to this cause. Mimi has been able to obtain photocopies of death certificates of family members who died 50 years ago, as that is what the State of Oregon allows, unless one is a direct relation to the deceased. Anne has been instrumental in obtaining a lot of obituaries that have appeared in California newspapers. I have been able to obtain many obituaries appearing in Washington and Oregon newspapers, due to connections I have with the Washington State Library and the University of Oregon Knight Library. I also have been able to get quite a number of death certificates of family members who died in California.

This information has been added to the collection I already had, bringing the number of obituaries to close to 2200. Most are correctly documented with the date and name of the newspaper where the obituary was printed. This has not been without significant expense and time. But the amount of information obtained has been enormous. Many of the pieces of the puzzle of our various branches have been found, and new branches of the family tree previously unknown have been discovered. All this makes for a fascinating story of the King family.

I continue to put out a call for any contributions anyone has to offer. I welcome anyone sending to me copies of obituaries, death, birth and marriage certificates, and family trees. Do not assume I have what you have. As you fill in your own family trees, please send me a copy. I share what I have and appreciate when others can help add what they can to my collection. The more we can document and share together, the less work for all. No reason for numerous family members to keep reinventing the wheel, when we can simply share what is already known.

If everyone is looking for a specific obituary of a King family member, let me know first, and if I do not have it, and the person died in Washington, Oregon or California, I may be able to get it. It is a lot harder to get a copy of an obituary from other states, as I do not have the connections elsewhere at this time.

The hope is to get this information on a CD. I have been adding so much to the collection lately, that I have postponed plans to do this. This will be quite an undertaking, and various people have offered ideas. We will be looking into options regarding this issue soon.

Editor's Note: We owe David a huge thank you for all the work he has put in the past two years gathering information and updating the family notebooks. He has been unstoppable. I salute you David!

Nahum King's Probate
by Anne Trussell

While doing some research at the LDS church in Salt Lake City, I ran across Nahum King's probate. This document brings up questions about the time surrounding Nahum and Sarepta's deaths. If you can shed some light on this mystery (or if you have more questions to add), please contact Mimi, Earle, David, or me.

1. Who was A. H. Gordon who asked to be appointed administrator of the estate? He was a Justice of the Peace in Benton County in 1866. Why did he get involved?
2. The probate date is November 5, 1866. Why did it take more than ten years after Nahum's death to initiate the probate?
3. Sarepta's death year has been in question... 1864 or 1869? The Bible record is smudged and no death notice has been found for her. Was it her death that sparked the probate? Her name isn't mentioned anywhere in the document, even though other female descendants are named. Can this confirm the 1864 death date?
4. Why are Saretta and Lydia left out of the probate? Why are the children of Sarah and Abigail not listed?
5. To complicate matters, in March 1867 Luther King, as administrator of the estate of John King, asked the Benton County Court to require Gordon to file an inventory of Nahum King's estate in Polk County. Why Polk County? Did Nahum die there?

I've tried to keep this faithful to the document, spelling errors and all.

Probate Case File #172
King, Nahum 1866
Benton County, Oregon
FHL US/CAN Film [2210556]

To the County Court of Benton County in the state of Oregon the undersigned? requests that Naham King deceased died intestate and was at the time of his death a resident of the said county of Benton and that the said dec'd left the following heirs to wit: Isaac King, Hopstill Norton, Lurcia Chambers, ("Abigail Fuller" is crossed off next), Rhoad Summers, Solom King are children of this area and reside in said county. Lucretia Hallock's heirs, grandchildren of said Naham King as follows to wit: Sally Ediman, Hope Mason, Rona Pitman, Amos Hallock, Serepta Rexford, Margaret Erwiin, resides in said county and one other child of said Hallock's heirs resides in the state of Ohio. Amos King resides in Multnomah County in the state of Oregon, and Luther King, son of John King dec'd and grandson of said Naham King - and Charles King, son of Stephen King dec'd who was the son of said Naham, resides in said county. That said Naham King's estate has not been administered and that said Naham died some years since and that the

undersigned asks that the letters of administration be granted to him on said estate.

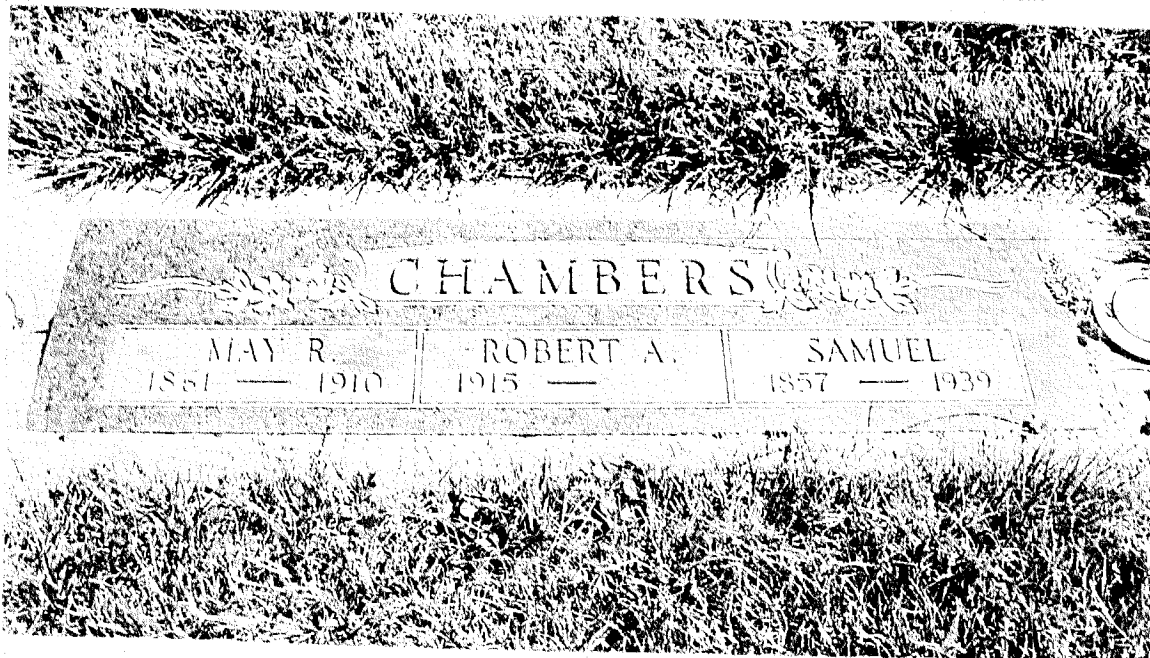
A.H. Gordon

Subscribed and sworn to before me this 5th day of November 1866.

B Nelson, Clerk

QUERIES:

1. Below is a photo of a **Chambers** grave in Eureka Cemetery in Newport, Lincoln County, Oregon. Samuel **Chambers** was Rowland and Lovisa King **Chambers'** son and May R. is his wife, May Rebecca Jeffries **Chambers**. But who is the Robert A. in the middle? Our Historian David Trask does not know either.



2. Amos Nahum **King**, son of Nahum & Sarepta, married second, Mrs. Fannie Gertrude **Roberts** on 16 March 1892 in Portland. What was her maiden name and when & where did she die?
3. George **King** son of Rufus **King** and grandson of Alfred and Mary Elizabeth Fowler **King** had one son, Cecil **King**, who died in Okinawa. (from George King's obituary). Was his death during the Battle of Okinawa in 1945? There is a Cecil **King** buried in the Golden Gate National Cemetery in San Bruno, California, with dates 8 August 1921 – 23 April 1945. Is this "our" Cecil King?

Nahum King and Sarepta Norton King Oregon Pioneers

Nahum King (1783-1856) and Sarepta Norton King (1791-1864) married in 1807 in Columbia County, New York, where Sarepta was born. Nahum's family migrated there from Massachusetts, his birthplace. Daughters Saretta and Lucretia were born in New York. Fourteen more King children were born in Madison County, Ohio, where the family settled in about 1810. Thirty years later the family moved to Carroll County, Missouri.

In 1845, Nahum and Sarepta, with twenty-four family members, headed west to Oregon. Persuaded to take a shortcut across eastern Oregon, they suffered terrible hardships on the Meek Cutoff, including the death of Sarah King Chambers near the Malheur River. Far behind the other wagons, exhausted and starving, they reached The Dalles and the daunting Columbia. Rafting the Columbia, John, Susan King and two children were lost. The Kings wintered near Portland. In early 1846, hunting for land, they found this beautiful, green valley and staked their claims here. Nahum and Sarepta rest in an unmarked grave on their claim near Wren. Many other Kings lived out their lives here in what is today, Kings Valley.

This is the wording on the front of our monument in the Kings Valley Cemetery. See photos on next page. However, I reformatted it from landscape to portrait mode so it would fit better into the newsletter. On the monument, it is in landscape. The back of the monument lists all 16 of Nahum and Sarepta's children. That list was in last year's King Folk Newsletter.

KING FAMILY MONUMENT – KINGS VALLEY CEMETERY

Nahum King and Sarepta Norton King, Oregon Pioneers

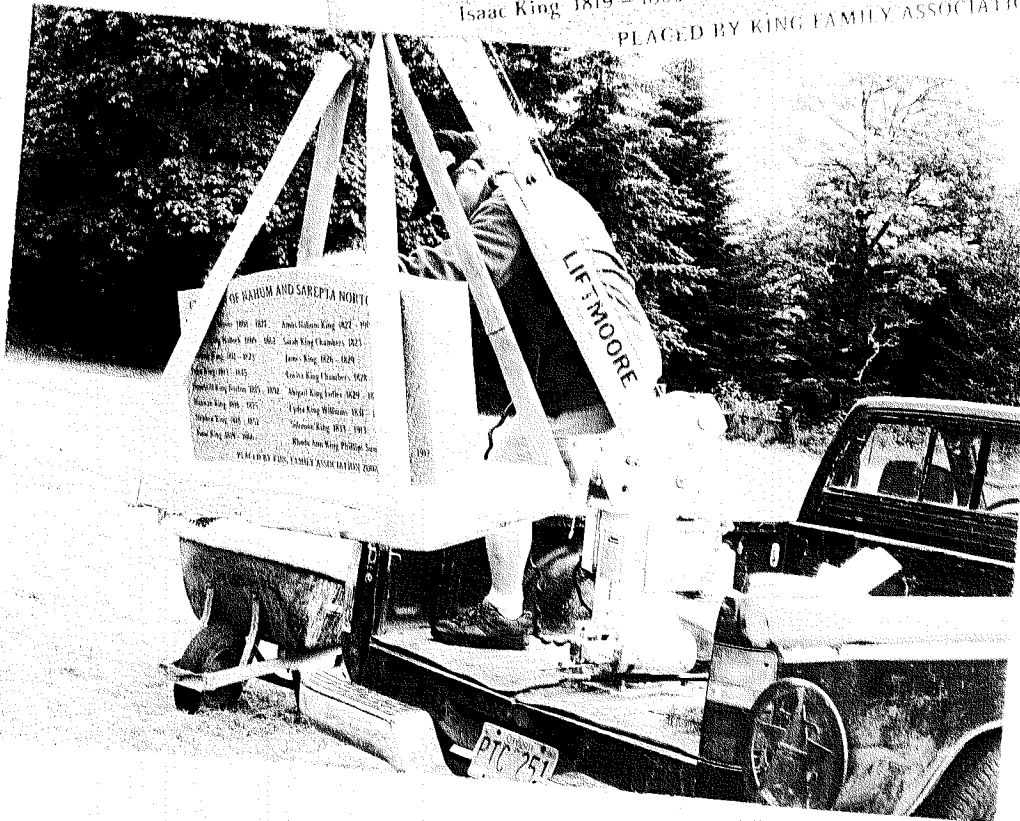
Nahum King (1783–1856) and Sarepta Norton King (1791–1864) married in 1807 in Columbia County, New York where Sarepta was born. Nahum's family migrated there from New Salem, Massachusetts, his birthplace. Daughters Sarepta and Lucretia were born in New York. Fourteen more King children were born in Madison County, Ohio, where the family settled in about 1810. Thirty years later the family moved to Carroll County, Missouri.

In 1845, Nahum and Sarepta, with twenty-four family members, headed west to Oregon. Persuaded to take a shortcut across eastern Oregon, they suffered terrible hardships on the Meek Cutoff, including the death of Sarah King Chambers near the Malheur River. Far behind other wagons, exhausted and starving, they reached The Dalles and the daunting Columbia. Rafting the Columbia, John, Susan King and two children were lost. The Kings wintered in Portland. In early 1846, hunting for land, they found this beautiful, green valley and staked their claims here. Nahum and Sarepta rest in an unmarked grave on their claim near Wren. Many other Kings lived out their lives here in what is today, Kings Valley.

CHILDREN OF NAHUM AND SAREPTA NORTON KING

- | | |
|-----------------------------------|--|
| Sarepta King Moore 1808 – 1877 | Amos Nahum King 1822 – 1901 |
| Lucretia King Hallock 1809 – 1862 | Sarah King Chambers 1823 – 1845 |
| Dulanny King 1811 – 1823 | James King 1826 – 1829 |
| John King 1813 – 1845 | Lovisa King Chambers 1828 – 1889 |
| Hopetill King Norton 1815 – 1892 | Abigail King Fuller 1829 – 1857 |
| Hannah King 1816 – 1825 | Lydia King Williams 1831 – 1921 |
| Stephen King 1818 – 1852 | Solomon King 1833 – 1913 |
| Isaac King 1819 – 1866 | Rhoda Ann King Phillips Summer 1835 – 1912 |

PLACED BY KING FAMILY ASSOCIATION 2008



Home At Last

Where was Margaret, my great-grandmother, who died in 1944? Her death and funeral were well-documented. So why couldn't I find her final resting place?

Margaret Lucretia Edelman was born near Wren in 1862. She grew up on her parents' donation land claim, which was located at the south end of Kings Valley, nearly adjacent to that of her great-grandparents, Nahum and Sarepta. Margaret married and eventually settled in Albany, where she lived for the next fifty years. When she became ill in October 1944, she went to Portland to live with her daughter (my grandmother). Margaret died in Portland on Christmas Day in 1944. Her funeral was held on December 28th.

But where was she buried or interred? Not next to her second husband, Charles Kiefer, who is buried at the Riverside Cemetery in Albany. Not in Benton County. Not in Linn County. Not at Portland Memorial near my grandparents.

In 2007, I wrote a letter to Lincoln Memorial Park in Portland, where I'd found some of Margaret's siblings. Yes, we have her, I was told. "Buried or interred?" I asked. "Neither," he replied. "She was unclaimed." He told me her cremains sat at the funeral home for ten years and were eventually sent back to Lincoln Memorial Park in 1954, where they were still in storage.

On a sunny April day in 2008, we picked up Margaret's cremains in Portland and returned her to Benton County, where she was born. She's now buried in Kings Valley Cemetery, near her own grandmother, Lucretia King Hallock. *By Anne Trussell*

KING FAMILY DEATHS REPORTED IN THE PAST YEAR

Alice Fromherz – spouse of Charles Fromherz – May 2008

Herb Schell – husband of Mary Chambers Shell – 15 June 2008

Lowanna Talbot Fishwood - mother of Donna Fishwood Brathovde – 9 June 2008

Bill Kiger – father of Naomi Kiger Jones – 22 June 2008

Florence Fromherz Gross – spouse of Louis Gross (deceased) – 25 July 2008

Annie Laurie King Burgess – mother of Charlotte Burgess Langston & sister of Frances King Ramsey – 18 December 2008

A Thought on why Nahum King's Probate was filed in Polk County, rather than Benton County (Probate copied by Anne Trussell – see page 12)

Our King Family Vice President, Earle Greig, has shared what he suspects might be the reason that Nahum King's probate was filed in Polk County rather than in Benton County. Earle said he was told that the Polk County towns of Dallas, Airlie and Falls City were practically headquarters for the valley in early days. That was probably because of easier accessibility to Polk County. Earle said that his mother enjoyed pointing out locations in Dallas where her dentist's office and some favorite stores were located. She was talking about 1910 – 1912. Of course, numerous professional offices for attorneys, doctors, etc. were also available.

Originally there were no bridges near Wren and Philomath from Kings Valley. Consequently, rather than try to ford Mary's River, the road to Corvallis went around it and over Cardwell Hill. Even after bridges were built, horses had a difficult time pulling freight over these steep grades. Earle's grandfather, Lincoln Allen, owned the Kings Valley store for several years and was still hauling most of his merchandise from Dallas as late as 1912.

Earle's grandmother was Dora Price, who was a granddaughter of Hopestill. Lincoln and Dora were married in 1895 in the church across the road from the Kings Valley Charter School.

DID YOU KNOW? From Earle Greig

That Naoma Kiger Baker donated the Sol King pump organ to the Horner Museum? (Naoma is the great granddaughter of Sol.) The Fred Kiger family (and the organ) were at Blodgett when Earle Greig lived there.

That Nahum King bought a pitcher at Fort Vancouver for Sarepta when they arrived from Missouri? And that the pitcher is now part of the Horner Musuem collection.

That a documentary film about Corvallis' first 150 years is going to be available on DVD? The title is "Stories & Legends: 150 years in the Heart of the Valley." The public showing is scheduled for April 11 at the Corvallis High School Auditorium. The DVD will be available after that.

What is meant when pioneer deeds refer to "meets (metes) and bounds, rods and chains?"

Meets loosely defined means where a boundary line meets another boundary.

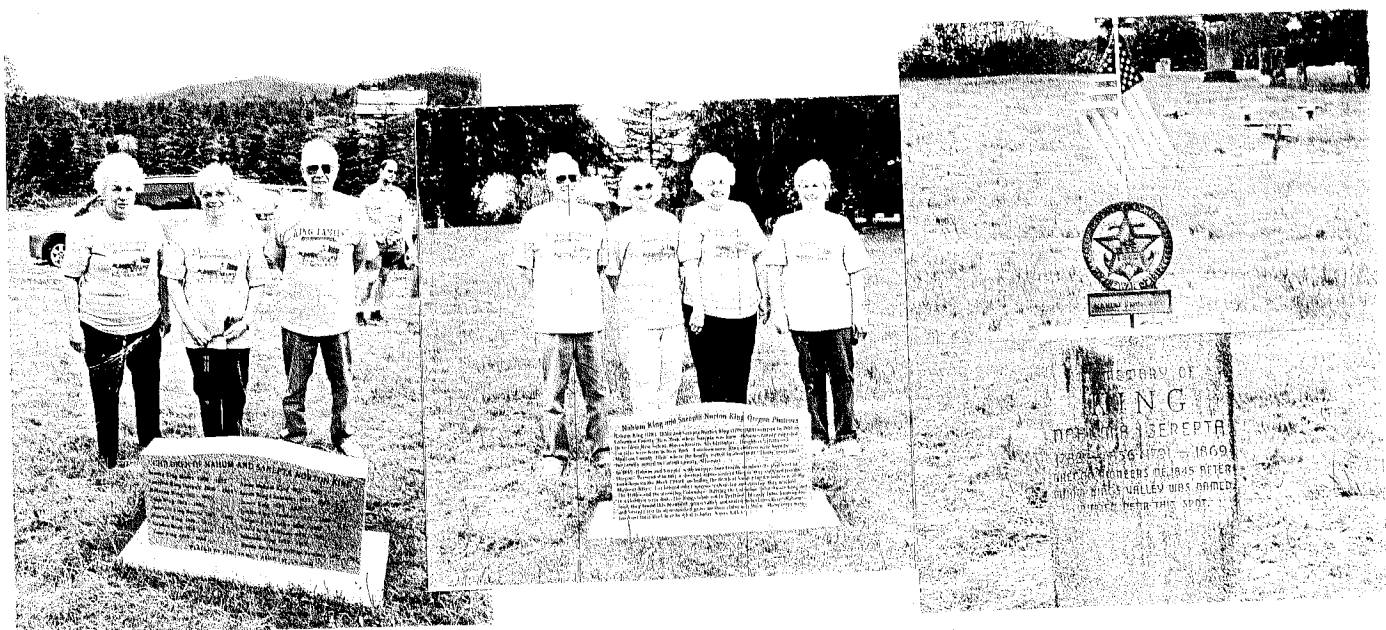
Bounds loosely defined means different boundaries. Thus, "meets & bounds" means starting from an identified point and proceeding a given distance in a certain direction and then proceeding another given distance in a certain direction until arriving back at the starting point. (Distances are often given as a number of chains – a chain is 66 feet.) A chain is not the type of chain we visualize. It is actually a series of iron rods that have eyes at each end are connected at the eyes. They usually have one hundred of the metal rods connected to make 66 feet. Thus each rod is about 7.92 inches long. 7.92

inches times one hundred pieces = 792 inches divided by 12 = 66 feet. A rod is 16.5 feet. Four rods = 66 feet or one chain. The chain that Avery used when he laid out the town of Corvallis is on display at the Benton County Musuem.

DEATH CERTIFICATE REQUESTS FROM HISTORIAN DAVID TRASK

- James William Savage, d. 1 March 1905 * Baby Girl Bancroft, d. 22 November 1956 *
- Sarah Hallock Edelman Bailey, d. unknown Serepta Norton Price, 2 March 1909 *
- Cecelia Fromherz, d. 3 March 1926 Julia M. Price, d. 15 February 1914
- Alfred King, d. 13 August 1908 * Richard LeRoy King, d. 2 June 1931
- Dora A. Read Plunkett, d. 12 January 1907 * Wiley Norton, d. 9 January 1933 *
- Philena Vanderpool Fowler, d. 28 November 1901
- Nancy Jane Melton Roberts, d. 15 January 1902 *

David says he has obituaries for the seven marked with an * but nothing at all for the others except the date. None of these appear on the Oregon Death Index nor were found in the files at the Oregon State Archives. If any of you have a death certificate for anyone on this list, please send it to our Historian David Trask. His mailing address is on the back page.



KING FAMILY NEWSPAPER ARTICLES

Morning Oregonian, June 5, 1887, Page 5:B

Miraculous Escape: Friday afternoon Amos King was driving his white Arabian horse along B Street, between Eighteenth and Nineteenth, when the animal backed the buggy containing Mr. King off an embankment, a distance of about sixty feet. Strange to relate, Mr. King was not thrown out of the buggy in the fall and only sustained a sprain of a wrist and a cut on the other hand. The top of the vehicle was broken, but the horse escaped unhurt. It was a most miraculous escape from instant death.

Oregon Spectator, 19 December 1850, Page 2:4

Messrs. King and Fuller of Portland have left at our office a potato measuring 23 ½ inches in circumference one way, and 12 ½ the other; weighing 1 ½ lbs. This was not the largest one raised by them, but was selected for its beauty and simetry (sic) of form. Messrs. K & F not only manufacture good leather, but raise good potatoes.

Corvallis Gazette Times, 24 September 1909, Page 2

Abe King Loses Heavily By Fire: 100 Tons of Hay, Large Barn and Much Feed Lost. \$2500 Loss, Barn Insured. Spontaneous Combustion Sets Fire to Barn and Destroys Structure With All Its Contents – Horses and Cattle Turned Out.

Fire destroyed a large barn, one hundred tons of hay, wagons, buggies, harness, feed and two calves at the Abe King farm last night about 11 o'clock. The total loss is placed at about \$2500, with less than \$1000 insurance.

House in Danger

The fire was not discovered by the Kings until the entire barn was a mass of flames. There was time to open the doors, and fortunately the horses and cattle in the structure were driven out, with the exception of two calves. There was nothing to do but let the fire burn and turn attention to the residence, which was in great danger. With the help of neighbors, who did valiant service in carrying water and wet blankets and carpets to the roof, the home was saved, though at times the heat from the burning barn was so intense as to make it well-nigh impossible to work.

Disrupts Milk Route

Abe King is one of the dairymen supplying milk to patrons in this city. The loss of his harness and vehicles made it impossible for him to make the regular rounds this morning and will seriously inconvenience him for some time. The loss of the hay – worth from \$10 - \$12 per ton – is extremely inconvenient. Mr. and Mrs. King are hard working people and have a very large family.

Spontaneous Combustion

The origin of the fire is not known. No one had been about the barn with fire or matches and no smoking had been done there. The only theory is that the hay overheated, resulting in spontaneous combustion. If this theory is correct, the Kings cannot understand why the fire did not occur sooner, as the hay had been in the barn some time, and much warmer weather has prevailed.

“King Folk” is a newsletter published by the family of Nahum and Sarepta Norton King, Oregon Pioneers of 1845. Annual subscriptions are \$10.00 due January 1st. These funds are used for various projects plus publication costs. Please make checks payable to “King Folk” and mail to Anne Trussell, 2108 Stacia Way, Sacramento, CA 95822.

All information published in “King Folk” is printed as it is presented. For that reason, the information may not be completely accurate. Corrections and updates are published whenever they become known. Please submit material for publication to: Mimi Stang, 1290 Valley View Drive, N.W., Salem, OR 97304 or e-mail (see below).

The annual King Family reunion is held in June on the first Saturday after Father’s Day at the Kings Valley Charter School in Kings Valley, Oregon.

Current Officers

President: Mimi Stang	MStang5165@aol.com
Vice President: Earle Greig	egreig@pioneer.net
Secretary: Patricia Plunkett Holler	lightandtruth@msn.com
Treasurer: Anne Trussell	atru@accessbee.com
Historian: David Trask	dltrask@aol.com

Please send queries to David Trask, 1533 Nottingham Circle, Medford, OR 97504.
Note that David collects obituaries of the King Family and can look one up for you.

Mimi Stang
1290 Valley View N.W.
Salem, OR 97304-3037